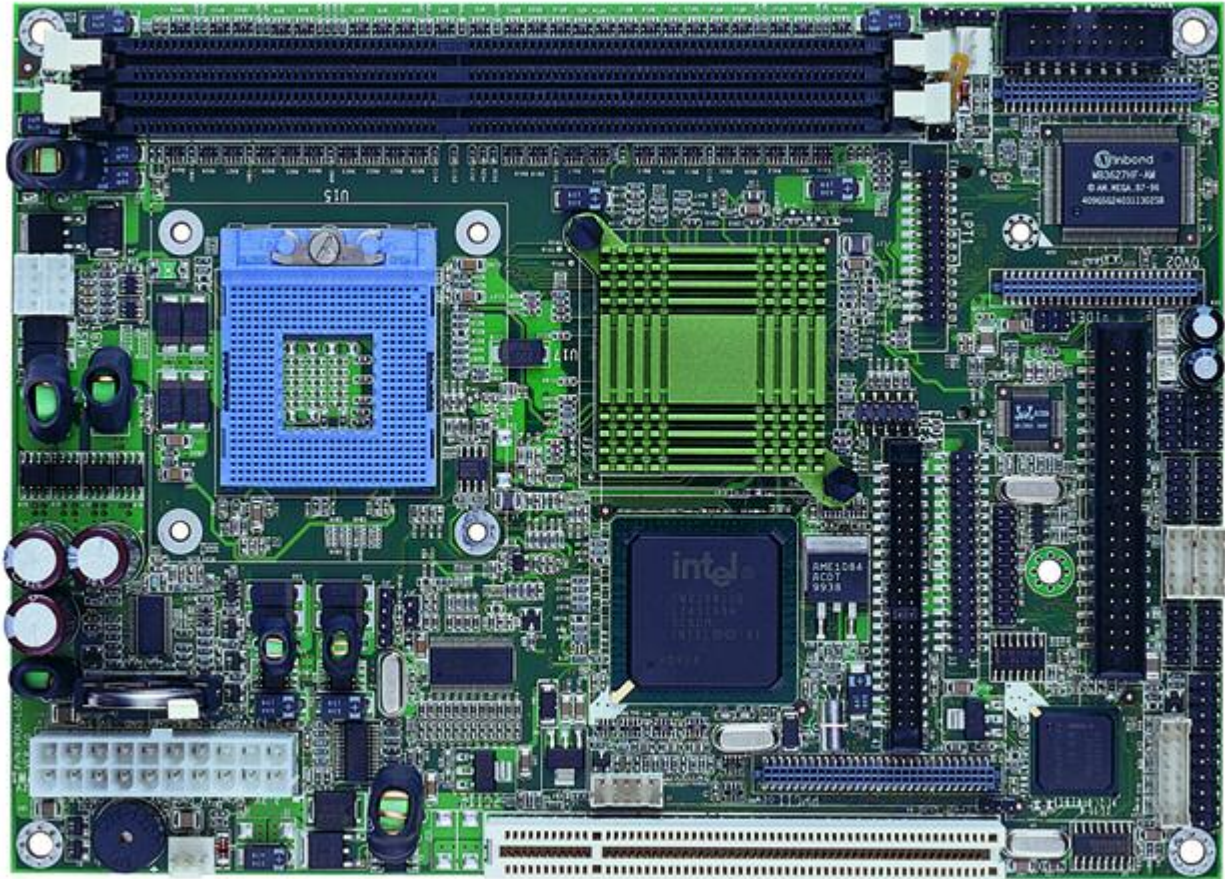


R&R industrial pc IPC124

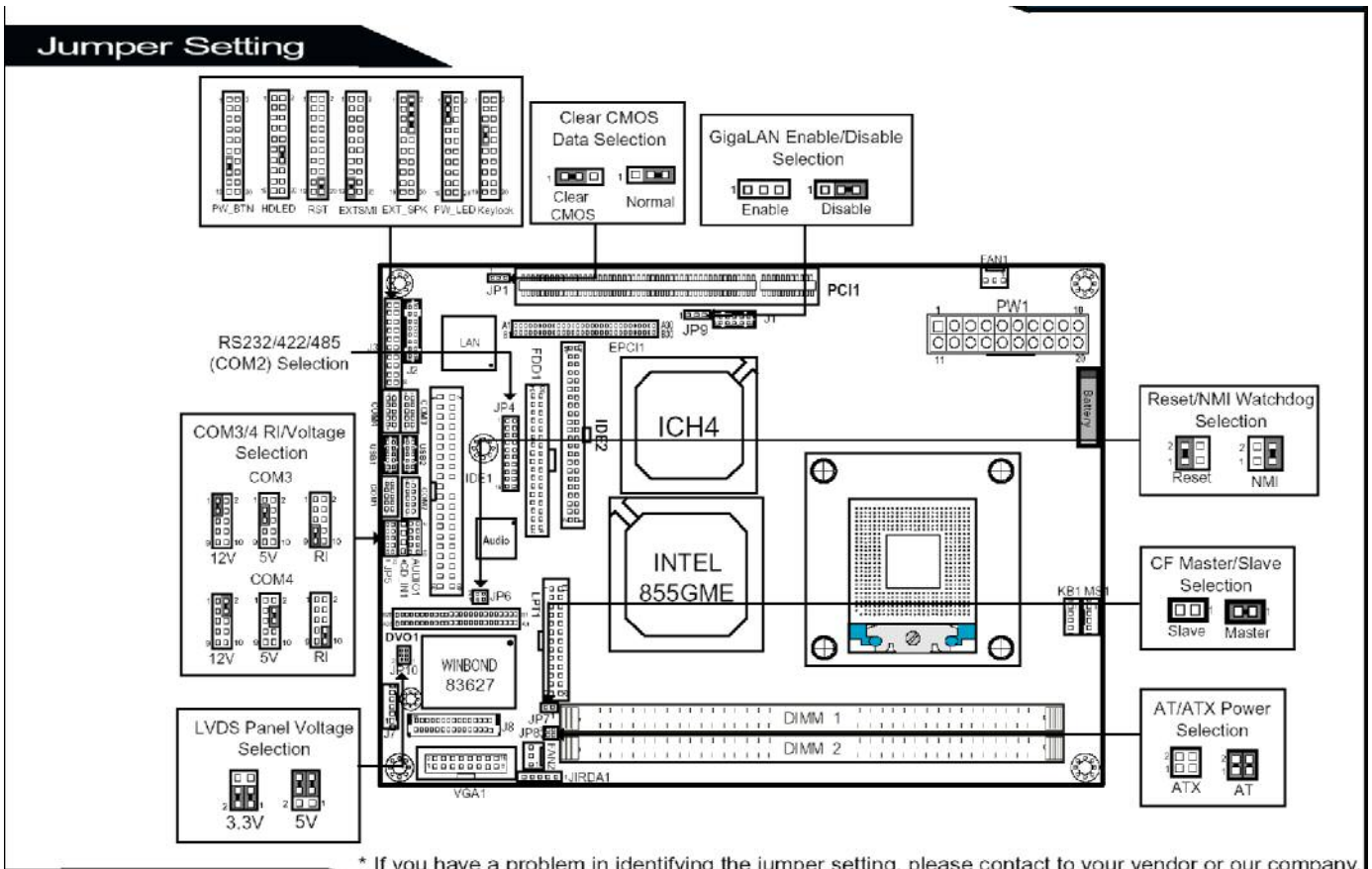
Front panel and housing	aluminium anodized
Display	12.1"
resolution	1024 x 768 Pixel
Center Luminance of White	450 cd
Contrast Ratio	700:1
Viewing angle	Horizontal +80 / -80, Vertical +80 / - 80
Touchscreen	Resistive
Touchscreen controller	RS232C or USB
cooling	Rear panel Heatsink
Power supply	24V / DC isolated

Single board computer

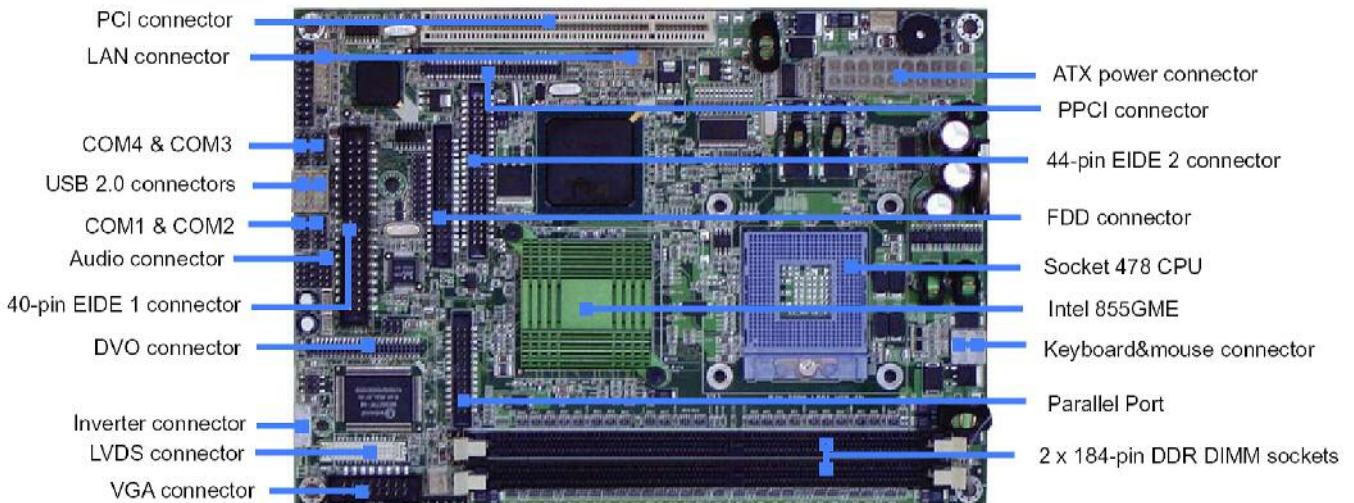
Einplatinenrechner 5,25" SBC for example
LANR 9455 or similar

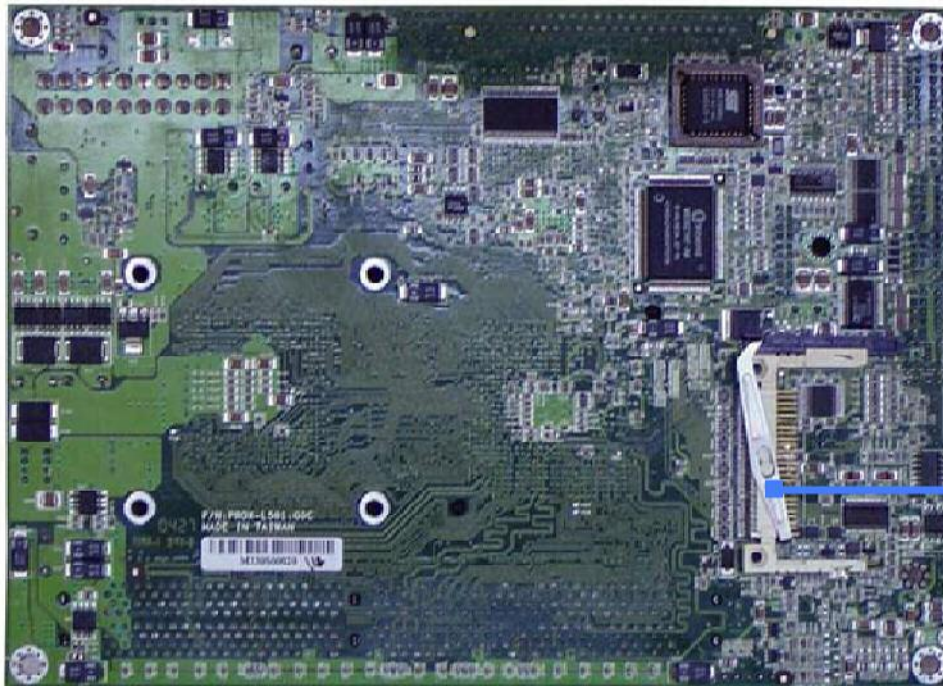


CPU	Pentium M 1.5 GHz bis 1.8 GHz FSB 400/ MHz or comparable
Main memory	2 x 184pin DDR SDRAM DIMM, 2GB (PC-266)
Chip set	INtel 855 GME + ICH4
interfaces:	
LAN	LAN 1: Intel 82562EM (10/100 Mbps) LAN 2 Intel 82541GI (10/100/1000 Mbps):
USB 2.0	4x
Audio	AC 97 Codec, Realtec ALS202A with Line-in/Line-out/MIC
IRDA	1 (SIR)
Parallel Port	1x
serial Port	4x COM
FDD	1x
CF	1x Compact Flash



* If you have a problem in identifying the jumper setting, please contact to your vendor or our company.





Compact Flash slot